

Your Story Starts Here



Sixth Form
Courses
24/25

- 05** How to Apply
- 06** Student Destinations
- 08** Our Success Stories
- 10** Study Programme
- 14** Beyond the Classroom
- 18** Supporting You
- 20** Courses
- 48** Talented Athlete Scholarship Scheme
- 54** Open Events



Use the QR codes on the subject pages to visit our website and find out about the skills you will gain on each course as well as the employers we work with.

Information within this guide is correct at the time of going to print.

Please be aware that some course delivery may take place off campus and between The Windsor Forest Colleges Group sites.



Courses

20 Art, Design
& Media

24 Business,
IT & Travel

28 Humanities

32 Languages,
Literature
& Culture

36 Mathematical
Sciences

38 Performing Arts

42 Sciences

46 Sport

50 GCSE Courses
& Pathway

52 Undergraduate
Courses



Campus Key

S Strode's College

W Windsor College

Welcome

Welcome to our Sixth Form Course guide for 2024. I am delighted you are considering joining us next year.

We are really proud of our students, our staff and everything that we achieve together. As our results have demonstrated, the high standards at our Colleges meet the aspirations of our talented students. We believe that all of our students have amazing potential and that it's our job to work with you to unlock that potential. We want you to aspire to be the best you can be and we will do everything we can to help you achieve your ambitions. Come and find out for yourself at our open events and feel the amazing Sixth Form spirit at Strode's and Windsor.



Gillian May
Group Principal and CEO

We are immensely proud of our students' exam results and of their successes in gaining places at top Russell Group Universities including Oxford and Cambridge Universities. We have been delighted to see our students enhancing their studies through incredible trips, visiting speakers, master classes and industry speakers. We pride ourselves on offering that perfect balance of independence and support, helping you to develop the skills needed for university, further study, higher apprenticeships, or employment while providing a guiding hand as needed to help you succeed.

We hope that you will join us next year and look forward to meeting you at one of our open events.



Amanda Down
Principal

How to Apply

Your Step-by-step Guide to Studying at Strode's or Windsor

Step 1: Choose Your Course

We offer a wide range of courses at all levels

– if you're still not sure, give us a call on **01753 793288**

or email info@windsor-forest.ac.uk for independent advice.

Step 2: Apply

Apply online at www.strodes-windsor.ac.uk

Step 3: Attend Your Interview

We will invite you to an interview to discuss your course choice and plans for the future. If your interview is successful, we will offer you a place which you will then need to accept to join us in September.

Step 4: Enrol

You will be sent instructions on how to enrol onto your course the summer before you start with us.

Step 5: Get Your Results

You will need your exam results to be able to enrol onto your chosen course. If your results are better than expected or you didn't do as well as you'd hoped, we can find a suitable alternative.

Step 6: Start College

We look forward to welcoming you in September!

Student Destinations

Each year we have students go onto a wide range of universities in the UK and abroad. This includes many impressive universities such as Oxford and Cambridge and the Russell Group.

Oxbridge Success

We were delighted that all of Oxbridge candidates secured places at these prestigious universities.



Salli Adams

A* A* A* A – Philosophy, Politics and Economics, University of Oxford



Juliette Searle

A* A* A B – History and Politics, University of Cambridge



Olivier Mohiddan

A* A A B – History, University of Oxford



Rares Cocilnau

A* A* A – Human Social Political Sciences, University of Cambridge



University of Durham

University of York

University of Liverpool

Nottingham Trent University

Keele University

University of Leicester

University of Warwick

University of Cambridge

University of Oxford

University of Cardiff

University of Bath

University of Reading

Royal Holloway,
University of London

University of Surrey

University of Kent

University of Southampton

Bournemouth University

University of Brighton

University of Sussex

Our Success Stories

Strode's College

Finn Mason

A* A* A*

Going to University of
Leeds to study Law



Megan Stewart

A* A* A

Going to University College
London to study Law

Daisy Phillips

A* A A A

Going to Warwick University to study
English Language and Linguistics



Jennifer Alvey

A A B

Going to University of Nottingham
to study Criminology



Emilia Wilkowski

A B D*

Going into working in education
as a SEN teaching assistant

Mehek Mazamal

A D* D*

Going to London South Bank
University to study Social Work



Windsor College

Study Programme

If you're aged 16–19, you will follow a study programme to help you develop academically, practically and personally.

Study programmes are designed to meet students' individual learning needs and includes all the elements that make up their individual timetable at the College. We want you to be confident and ready to meet the demands of learning, work and life.

Our students typically study three A Levels or a mixed Level 3 BTEC programme, which is the equivalent to three A Levels. Level 2 students will complete a BTEC or UAL course alongside English and maths GCSEs.



Choose the Right Course & Level for You

A Minimum of Five GCSEs Grade 4 & Above

Including English and maths. You must also meet the specific subject entry requirements.

Your Options at Strode's & Windsor:

A Level Programme: Two year study programme of three A Levels.

Mixed Programme: Two year study programme of A Levels and Level 3 BTEC.

Your Progression After College:

University, apprenticeship or employment.

A Minimum of Four GCSEs Grade 4 & Above

Including English and maths. You must also meet the specific subject entry requirements.

Your Options at Strode's & Windsor:

Level 3 BTEC in any combination for two years.

Your Progression After College:

University, apprenticeship or employment.

Less than Four GCSEs

Minimum of three grade 3s and one grade 2 including English or maths at grade 3.

Your Options at Strode's & Windsor:

Level 2 BTEC including English and/or maths for one year.

Your Progression

A Level Programme: Two year study programme of three A Levels.

Mixed Programme: Two year study programme of A Levels and Level 3 BTEC.

Apprenticeship



A Levels

With A Levels you can study a number of different subject areas. These will give you the academic standing needed for university, Higher Education, employment or a higher level apprenticeship.

Level 3 BTEC Courses

BTEC courses are industry-focused qualifications which combine practical and theoretical studies ranging from certificate level to extended diploma. You can also gain valuable UCAS points and progress to university through studying BTECs.

Level 2 BTEC Pathway

The Level 2 BTECs are one year courses in a variety of fields intended as a foundation year to help you progress onto a Level 3 programme.

Mixed Programmes

When on a Level 3 programme, you have the option to study A Levels, BTECs, or a combination of both. Most students study three A Levels or the equivalent of. Please see below for the weighting of different types of BTEC qualification and how they might work when mixed with A Levels.

Qualifications Explained

Qual Code	BTEC Level	Equivalent to
C	Level 2 Award/ Certificate	Approximately GCSE grade 4 or above
EC	Level 3 Extended Certificate	One A Level
D	Level 3 National Diploma	Two A Levels
ED	Level 3 Extended Diploma	Three A Levels
TL	T Level	Three A Levels



Scan the QR code or email
admissions@windsor-forest.ac.uk
to find out more

Beyond the Classroom

A person wearing a bright orange jacket and a large orange backpack is hiking up a stone path. The path is surrounded by dense green foliage and trees. In the background, there are steep, rocky mountains under a clear sky. The overall scene suggests an outdoor adventure or a hike in a national park.

Coming to Strode's or Windsor will give you the chance to develop your skills through a range of extra-curricular activities. These activities will allow you to make new friends, have fun and develop transferable skills to enhance your CV or UCAS personal statement.

We want to enrich your studies and further deepen your learning and understanding but we also want to give you every opportunity to enjoy new experiences and broaden your horizons. Our goal is that when you progress from Strode's or Windsor, you do so as self assured and confident young adults.



Duke of Edinburgh

Build confidence, resilience skills, team working and demonstrate your resourceful side. Add value to your UCAS application and CV.



Elite Athletes

We are a Talented Athlete Scholarship Scheme (TASS) accredited College providing support to help our talented students balance the demand of high level training alongside College study.



The Gold Arts Award

This Level 3 qualification is worth 16 UCAS points and will benefit those students aiming for art/drama school or university by showcasing a specialism outside of College.



Extended Project Qualification (EPQ)

Increase your UCAS points by studying the EPQ (worth half an A Level) – choose a subject you are interested in and demonstrate your independent research skills.

Student Union Executive

Our active Student Union (SU) leads our student voice on a number of issues close to the hearts of young people. By being part of the SU, you will enjoy a range of opportunities and activities to enrich your time at College.

National Competitions

Our students have achieved success in a number of challenges including the Chemistry Olympiad, the UK Senior Maths Challenge, the NSEC (National Schools Employability Challenge) and the Interior Design competitions for the British Display Society.

Sport

There's an exciting sports programme and extensive facilities at Strode's, also open to Windsor students. There are sports pitches, hall, courts and a well-equipped fitness suite. Regular competitions and additional personal fitness qualifications are also available.

Guest Speakers & Master Classes

Guest speakers will be a key part of your College experience. These will deepen your understanding with talks from keynote speakers and experts in their fields.

Trips & Visits

Our trips and visits are undoubtedly a highlight, both complementing the curriculum and giving students national and international experiences beyond the classroom.

A*spire Programme

Our exclusive A*spire Programme is designed to stretch and challenge academically gifted students. This programme will build your confidence and skills to articulate well-reasoned thoughts, challenge conventional thinking and build strong arguments.

"Our A*spire students are exposed to inter-disciplinary activities to provide a super curricular experience. The results have been outstanding!"

– John Marrill A*spire Lead



Supporting You



The physical and mental wellbeing of all our students is extremely important to us, so we provide a number of support services to help.

Safeguarding

It is important to us that everyone feels safe while at College. Our Safeguarding team help students make good decisions and offer a range of advice from digital safety, radicalisation, neglect, to homelessness, mental health and personal safety.

Counselling


The Colleges provide a fully qualified counsellor that can be accessed during the College day.

Health & Wellbeing

We provide help and information about staying healthy with a range of services and advice for your wellbeing and safety.

Careers & Employability

Our accredited team is always on hand to offer impartial and confidential advice and guidance on courses, careers and training.



Personal Support Services

You are a name not a number at Strode's and Windsor Colleges and we are dedicated to helping you achieve your potential.

Personal Tutors

You will have a tutor who will play a central role in supporting your progress at sixth form. Group tutorials and one-to-one meetings will help keep you on track with your studies as well as helping you plan for life after College.

Learning Support

The Learning Support team are there to help with literacy and numeracy skills, provide you with expert support with dyslexia and dyspraxia, support time management, revision skills, essay writing, assistive technology and access arrangements.

Exam Arrangements

We know that some students will require special arrangements when taking exams and support can be provided, post assessment, in accordance with awarding bodies' guidelines. Dependent upon assessment results, scribes and readers may be supplied and assistive equipment may be borrowed.

Financial Support

For those from low household income families, the Colleges offer financial support for the compulsory costs associated with your course.

Please email us for information about support at the College.
studentservices.sixthform@windsor-forest.ac.uk

Art, Design & Media

Start Your Career

Graphic Design · Sculpture · TV Production Runner
Animation · Advertising & Marketing · Photography



We also offer an
Art, Design & Media
undergraduate course

Please see page 52

A Level Art & Design (3D Design) S

This **2 year course** requires either a GCSE in art and design at grade 4 or a Level 2 art BTEC at merit or a demonstrable interest in and experience of the subject, plus the standard entry requirements of an A Level or mixed programme. See page 11.

A Level Art & Design (Fine Art) S

This **2 year course** requires either a GCSE in art and design at grade 4 or a Level 2 art BTEC at merit or a demonstrable interest in and experience of the subject, plus the standard entry requirements of an A Level or mixed programme. See page 11.

A Level Art & Design (Graphic Communication) S W

This **2 year course** requires either a GCSE in art and design at grade 4 or a Level 2 art BTEC at merit or a demonstrable interest in and experience of the subject, plus the standard entry requirements of an A Level or mixed programme. See page 11.

A Level Art & Design (Photography) S W

This **2 year course** requires either a GCSE in art and design at grade 4 or a Level 2 art BTEC at merit or a demonstrable interest in and experience of the subject, plus the standard entry requirements of an A Level or mixed programme. See page 11.

A Level in Film Studies S W

This **2 year course** requires either a GCSE in English language or English literature at grade 5, plus the standard entry requirements of an A Level or mixed programme. See page 11.

A Level in Media Studies S W

This **2 year course** requires either a GCSE in English language or English literature at grade 5, plus the standard entry requirements of an A Level or mixed programme. See page 11.



See More

Level 3 BTEC Extended Diploma in Art & Design Practice **W**

This **2 year course** requires four GCSEs at grade 4 or above, including English or maths, plus art and may include a BTEC.

Alternatively, Level 2 BTEC in art and design at merit or a demonstrable interest in and experience of the subject.

Level 3 BTEC Extended Diploma in Fashion, Interiors & 3D Design **W**

This **2 year course** requires four GCSEs at grade 4 or above, including English or maths, plus art and may include a BTEC.

Alternatively, Level 2 BTEC art and design at merit or a demonstrable interest in and experience of the subject.

Level 3 Extended Diploma in Creative Media Practice **W**

This **2 year course** requires four GCSEs at grade 4 or above, including English or maths, plus art and may include a BTEC.

Alternatively, Level 2 BTEC in creative media at merit and GCSE English at grade 4.

Level 3 BTEC Diploma in Creative Digital Media Production (Film & Television) **S**

This **2 year course** requires four GCSEs at grade 4 or above, including English and may include a BTEC.

Alternatively, Level 2 BTEC in creative media at merit and GCSE English at grade 4.

Eva's Experience

"I love how creative I can be and all the opportunities we are given. Photography has a great studio and it's amazing to collaborate with other arts students."



Level 3 BTEC Extended Certificate in Digital Film & Video Production S

This **2 year course** requires four GCSEs at grade 4 or above, including English, maths and may include a BTEC.

Alternatively, Level 2 BTEC in creative media at merit and GCSE English at grade 4.

Level 3 BTEC Foundation Diploma in Hair & Makeup Effects for Film & Theatre W

This **2 year course** requires four GCSEs at grade 4 or above if combined with other another BTEC or five GCSEs at grade 4 or above if studying alongside two A Levels.

T Level Media Broadcast & Production S W

This **2 year course** requires five GCSEs at grade 4 or above, including English at grade 5, maths grade 4 and preferably media at grade 5.

Level 2 BTEC Certificate in Creative Media Production S

This **1 year course** requires four GCSEs, three at grade 3 and one at grade 2, including English or maths at grade 3.

Alternatively, three GCSEs, including English or maths at grade 3, plus one Level 2 BTEC.

Students must be able to show a demonstrable interest in or experience of a creative subject.

Level 2 UAL Diploma in Creative Media Production & Technology W

This **1 year course** requires four GCSEs, three at grade 3 and one at grade 2, including English or maths at grade 3.

Alternatively, three GCSEs, two at grade 3 and one at grade 2 including English or maths at grade 3, plus a pass in a Level 2 BTEC or OCR First Certificate.

Business, IT & Travel

Start Your Career

Games Designer · Computer Support · Travel Agent
Marketing · Human Resources · Flight Attendant



We also offer
a Business
undergraduate course

Please see page 52

www.strodes-windsor.ac.uk/study

A Level in Business Studies **S W**

This **2 year course** requires GCSEs in English language at grade 4 and maths at grade 5, plus the standard entry requirements of an A Level or mixed programme. See page 11.

A Level in Economics **S W**

This **2 year course** requires GCSEs in English language at grade 5 and maths at grade 6, plus the standard entry requirements of an A Level or mixed programme. See page 11.

Level 3 BTEC National Diploma in Business **S**

This **2 year course** requires four GCSEs at grade 4 or above, including English and maths and may include a BTEC.

Level 3 BTEC National Extended Certificate in Business **S W**

This **2 year course** requires four GCSEs at grade 4 or above, including English and maths and may include a BTEC.

Taylor's Experience

"I really enjoyed the trip to Twickenham Rugby Stadium, group activities and presentations – the correlation to real life examples are great."



Find out
more about
Business

Level 3 BTEC National Extended Diploma in Business W

This **2 year course** requires four GCSEs at grade 4 or above, including English and maths and may include a BTEC.

Level 3 BTEC National Extended Certificate in Information Technology S

This **2 year course** requires four GCSEs at grade 4 or above, including English and maths and may include a BTEC at a merit or above.

Level 3 BTEC National Extended Certificate in Travel & Tourism S

This **2 year course** requires four GCSEs at grade 4 or above, including English and maths and may include a BTEC at a merit or above.

T Level in Management & Administration S W

This **2 year course** requires five GCSEs at grade 4 or above, including English and maths.

Level 2 BTEC Certificate in Business S

This **1 year course** requires four GCSEs, three at grade 3 and one at grade 2, including English or maths at grade 3.

Alternatively, three GCSEs, including English or maths at grade 3, plus one Level 2 BTEC.



Find out
more
about IT

Different

Donalds

changes Menus for each Country
eg) In Japan they provide mochi
provides a more localised popular meal for local

than the original American McMenus
Helps compete Against Domestic Businesses

McDrawbacks

lose by does it

put ♥
leading to all ♥
audiences ♥

M

McLovin' it



Find out more
about Travel
& Tourism

Humanities

Start Your Career

Criminal Psychology · Marketing · Journalism · Law
Financial Services · Politics · Publishing · Accountancy



www.strodes-windsor.ac.uk/study



Jack's Experience

"I love law because of the vast number of interesting topics we cover. It is an ever changing subject with new developments in law affecting what you learn."

A Level Geography S W

This **2 year course** requires GCSEs in English language or English literature at grade 5, maths at grade 4 and geography at grade 5 if taken, plus the standard entry requirements of an A Level or mixed programme. See page 11.

A Level History (Early Modern) S

This **2 year course** requires GCSEs in English language at grade 5 and history at grade 5 if taken, plus the standard entry requirements of an A Level or mixed programme. See page 11.

A Level Modern History S W

This **2 year course** requires GCSEs in English language at grade 5 and history at grade 5 if taken, plus the standard entry requirements of an A Level or mixed programme. See page 11.

A Level Law S W

This **2 year course** requires GCSEs in English language or English literature at grade 5, plus the standard entry requirements of an A Level or mixed programme. See page 11.



See More

A Level Politics S W

This **2 year course** requires GCSEs in English language or English literature at grade 5, plus the standard entry requirements of an A Level or mixed programme. See page 11.

A Level Psychology S W

This **2 year course** requires GCSEs in science at grade 6, English language and maths at grade 4, plus the standard entry requirements of an A Level or mixed programme. See page 11.

A Level Sociology S W

This **2 year course** requires GCSEs in English language or English literature at grade 5, plus the standard entry requirements of an A Level or mixed programme. See page 11.

Level 3 WJEC Applied Diploma in Criminology S W

This **2 year course** requires four GCSEs at grade 4 or above, including English language or English literature at grade 5 and may include a BTEC at a merit or above.

Level 3 BTEC Extended Certificate in Applied Psychology S W

This **2 year course** requires four GCSEs at grade 4 or above, including English and maths at grade 4 and science at grade 5 and may include a BTEC at a merit or above.

Alessandrei's Experience

"I like that we are able to freely discuss societal issues that are happening in modern society and at the same time apply it to how society functions today."





Languages, Literature & Culture

Start Your Career

Copywriter · Journalist · Social Media Manager

Content Creator · Diplomatic Service · Author



www.strodes-windsor.ac.uk/study

A Level Classical Civilisation S

This **2 year course** requires GCSEs in English language or English literature at grade 5, plus the standard entry requirements of an A Level or mixed programme. See page 11.

A Level English Language S W

This **2 year course** requires GCSEs in English language at grade 5, plus the standard entry requirements of an A Level or mixed programme. See page 11.

A Level English Language & Literature S

This **2 year course** requires GCSEs in English language and English literature at grade 5, plus the standard entry requirements of an A Level or mixed programme. See page 11.

Sofia's Experience

"Having the opportunity to attend college for lessons only, coupled with the teachers granting me freedom during these sessions, has made my learning experience really enjoyable"



See More



A Level English Literature S W

This **2 year course** requires GCSEs in English language and English literature at grade 5, plus the standard entry requirements of an A Level or mixed programme. See page 11.

A Level Philosophy S W

This **2 year course** requires GCSEs in English and maths at grade 5, plus the standard entry requirements of an A Level or mixed programme. See page 11.

A Level French S

This **2 year course** requires GCSEs in French at grade 6 and English language at grade 4, plus the standard entry requirements of an A Level or mixed programme. See page 11.

A Level Spanish S

This **2 year course** requires GCSEs in Spanish at grade 6 and English language at grade 4, plus the standard entry requirements of an A Level or mixed programme. See page 11.

Jack's Experience

"English literature is a wonderful subject. The syllabus is just brilliant, and the teachers have really helped me acclimatise to the world of A Levels."



Mathematical Sciences

Start Your Career

Cyber Security · Information Systems Manager

IT Consultant · Programmer · Statistician



www.strodes-windsor.ac.uk/study

A Level Computer Science **S W**

This **2 year course** requires GCSEs in English at grade 4, maths and science (including computer science) at grade 6, plus the standard entry requirements of an A Level or mixed programme. See page 11.

A Level Mathematics **S W**

This **2 year course** requires a GCSE in maths at grade 6, plus the standard entry requirements of an A Level or mixed programme. See page 11.

A Level Further Mathematics **S**

This **2 year course** requires a GCSE in maths at grade 7, plus the standard entry requirements of an A Level or mixed programme. See page 11.



Sarina's Experience

"I love the algebra topics of maths. It's useful in everyday life and it's exciting especially when you understand the topic."



See More

Performing Arts

Start Your Career

Actor · Arts Journalism · Broadcasting · Composer
Choreographer · Dancer · Stage Management



We also offer a
Performing Arts
undergraduate course

Please see page 52

www.strodes-windsor.ac.uk/study

David's Experience

"I've had an interest in music and computers from a young age and it made sense to combine my favourite two subjects to gain higher levels of knowledge in those areas."



A Level Dance S

This **2 year course** requires the standard entry requirements of an A Level or mixed programme. See page 11.

Students must have achieved GCSE English language or English literature at grade 4, plus show a demonstrable interest in dance, or a Level 2 BTEC in performing arts at merit or GCSE dance at grade 4.

A Level Drama & Theatre Studies S

This **2 year course** requires the standard entry requirements of an A Level or mixed programme. See page 11.

Students must show a demonstrable interest in drama or grade 5 in English language or literature.



See More

A Level Music Technology S

This **2 year course** requires a GCSE in maths at grade 4, plus the standard entry requirements of an A Level or mixed programme. See page 11.

Students must show a demonstrable interest in recording, computer sequencing and composition as well as performance on one instrument and keyboard skills.

Level 3 BTEC Extended Certificate in Performance (Acting) (NQF) S

This **2 year course** requires four GCSEs at grade 4 or above, including English, drama, performing arts and may include a BTEC.

Alternatively a Level 2 BTEC in performing arts at merit or proven experience.

Level 3 BTEC National Extended Certificate in Music Performance S

This **2 year course** requires four GCSEs at grade 4 or above, including English, maths, music (if taken) and may include a BTEC. Alternatively a Level 2 BTEC.

Students must be able to perform on one instrument to grade 3 standard or above.

Level 3 UAL Foundation Diploma in Performing & Production Arts W

This **2 year course** requires four GCSEs at grade 4 one of which may be a Level 2 BTEC/ UAL Diploma in performing arts at merit.

Level 3 UAL Extended Diploma in Performing & Production Arts W

This **2 year course** requires four GCSEs at grade 4 or above or a Level 2 BTEC/UAL Diploma in performing arts at merit.



Sciences

Start Your Career

Forensic Science · Medicine · Genetic Engineering
Scientific Research · Engineer · Pharmacist



www.strodes-windsor.ac.uk/study

A Level Biology S W

This **2 year course** requires GCSEs in maths at grade 6 and combined science or biology at double grade 6, plus the standard entry requirements of an A Level or mixed programme. See page 11.

A Level Chemistry S W

This **2 year course** requires GCSEs in maths at grade 6 and combined science or chemistry at double grade 6, plus the standard entry requirements of an A Level or mixed programme. See page 11.

A Level Physics S W

This **2 year course** requires GCSEs in maths at grade 6 and combined science or physics at double grade 6, plus the standard entry requirements of an A Level or mixed programme. See page 11.

Students are advised to take A Level maths if taking A Level physics.

Level 3 BTEC National Extended Certificate in Applied Science S W

This **2 year course** requires four GCSEs at grade 4 or above, including maths and combined science at grade 5 or a Level 2 BTEC science at merit.



Archie's Experience

"I've always had an interest in the sciences but by choosing biology, chemistry and maths it gave me a broad range of avenues to take if I wasn't sure on my future career."



See More



Level 3 BTEC National Diploma in Applied Science **S W**

This **2 year course** requires either four GCSEs at grade 4 or above, including maths and combined science at grade 5 in science or a Level 2 BTEC in science at merit.

Level 3 BTEC National Extended Certificate in Health & Social Care **S**

This **2 year course** requires four GCSEs at grade 4 or above, including English and science or a Level 2 BTEC in science at merit, plus Level 2 BTEC in health and social care at merit if taken.

T Level Science **S**

This **2 year course** requires five GCSEs grade 4 and above, including English and maths, plus combined science at grade 5–5 or at least separate sciences at grade 5.

Level 2 BTEC Certificate in Health & Social Care **S**

This **2 year course** requires four GCSEs, three at grade 3 and one at grade 2, including English or maths and science at grade 3.

Natasha's Experience

"I like that biology is very interesting and it explores many aspects in loads of detail. I also love the practical work we get to do, my personal favourites were the heart and fish gill dissection."



Sport

Start Your Career

Personal Trainer · PE Teacher · Sports Coach

Sports Psychologist · Sports Therapist · Nutritionist



www.strodes-windsor.ac.uk/study

A Level Physical Education S

This **2 year course** requires GCSEs in English, maths and science at grade 4, plus PE at grade 5 if taken, plus the standard entry requirements of an A Level or mixed programme. See page 11.

Level 3 BTEC Extended Certificate in Sport & Exercise Science S

This **2 year course** requires four GCSEs at grade 4 or above, including English, maths and science or a Level 2 BTEC in science at merit, Level 2 BTEC in sport at merit or GCSE PE at grade 4 if taken.

Level 3 BTEC National Extended Diploma in Sport S

This **2 year course** requires four GCSEs at grade 4 or above, including English or maths and Level 2 BTEC in sport at merit or GCSE PE at grade 4 if taken.

Level 3 BTEC National Extended Diploma in Sport (Football Specialism) S

This **2 year course** requires four GCSEs at grade 4 or above, including English or maths and Level 2 BTEC in sport at merit or GCSE PE at grade 4 if taken.

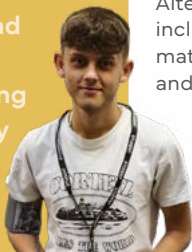
Level 2 BTEC Certificate in Sport S

This **1 year course** requires four GCSEs, three at grade 3 and one at grade 2, including English or maths at grade 3.

Alternatively, three GCSEs, including English or maths at grade 3 and a Level 2 BTEC.

Leo's Experience

"I chose to do A Level PE because I did well at GCSEs and I really enjoy it – especially learning about the history of sport."



See More

Talented Athlete Scholarship Scheme





Learn more at
www.strodes-windsor.ac.uk/college-life/tass

TASS (Talented Athlete Scholarship Scheme) is a Sport England funded partnership between talented athletes, education institutions and national governing bodies of sport.

As a proud TASS accredited College, we give talented athletes the opportunity to combine academic excellence with elite performance support. This means athletes can achieve their potential in education while continuing to compete and develop within their sport.

We also ensure training and sport can run alongside lessons and studying by providing more flexibility and offering catch-up sessions.

Abi's Experience

"The TASS programme gives me reassurance that the college supports me in my sport and that they are aware of my high commitment outside of college. I can speak to teachers if I am struggling and they help me balance college and sport."



GCSE Pathway



Getting a good pass in English and maths GCSE is important for your future progression and career.

The government now requires every student without a grade 4 or above to continue with these subjects until 18. At our Colleges you will have expert post-16 support to develop your potential and increase your current grade.

These three GCSEs are studied alongside a Level 2 BTEC qualification. You may have the opportunity to study English or maths alongside a Level 3 programme if you have not achieved a grade 4.

GCSE Mathematics S W

This **1 year course** is vital for your future progression. This is a great way to improve your current grade.

GCSE English S W

This **1 year course** is challenging and fast-paced. This is a great way to increase your current grade.

Level 2 GCSE in Combined Science S

This **1 year course** requires three GCSEs at grade 3 and one at grade 2, including science at grade 3 and either English or maths at grade 3.

Students must have an enthusiasm and aptitude for science related subjects.



Learn more at
www.strodes-windsor.ac.uk/study/qualifications/gcse

Undergraduate Courses

Getting an advanced level qualification provides increased choice and opportunity, increased career opportunities, higher earnings and more confidence!

Access to Higher Education

If you don't have the relevant qualifications to go to university or are returning to study, you can get the qualifications you need in just one year on an Access to Higher Education course.

We offer a number of different pathways:

- Nursing and Healthcare Professions
- Social Work and Mental Health Professions
- Social Sciences and Education

Funding Your Studies

Courses are covered by a Student Tuition Fee Loan awarded by the Student Loans Company, visit www.slc.co.uk to find out more. You only start to repay your loan once you are earning over £27,295 per annum.



Learn more & view
current vacancies at
[www.windsor-forest.ac.uk
/higher-education](http://www.windsor-forest.ac.uk/higher-education)

University Partners



UNIVERSITY OF
WEST LONDON



bucks
new university



ual: university
of the arts
london



Pearson



University of
Reading



St Mary's
University
London

Higher Education Courses

**Level 4 Certificate in
Education & Training W**

**Foundation Year in
Education Studies W**

**Level 4 UAL
Professional Diploma in
Performance W**

**Level 4 BTEC
Foundation Diploma
in Art, Design & Media
for Stage & Screen W**

**HND in Digital
Technologies W**

Scott's Experience

"The support I got from
my lecturers and staff was
amazing. I never thought
I'd be here five years ago
having finished a degree."



Open Events

Strode's

Thursday 19th October 2023

Thursday 8th February 2024

Thursday 4th July 2024

Running from 4:30pm–7pm

Windsor

Tuesday 17th October 2023

Tuesday 20th February 2024

Tuesday 2nd July 2024

Running from 4:30pm–7pm



Register for
an Open Event

Strode's

01784 437506

High Street, Egham,
Surrey, TW20 9DR

Windsor

01753 793000

St Leonards Road, Windsor,
Berkshire, SL4 3AZ

info@windsor-forest.ac.uk
www.strodes-windsor.ac.uk



**WINDSOR
FOREST**
COLLEGES GROUP



**STRODE'S
COLLEGE**



**WINDSOR
COLLEGE**